

Sandwich pressure regulator with manual adjust.

OPERATIONAL BENEFITS

1. Easy mounting : saves on installation costs in comparison with inline regulators.
2. Allows to have compact, all-included units.
3. Large orifice provides high flow.
4. Various functions available.
5. Simple, reliable and solid design.



Reset

HOW TO ORDER

REGULATORS FOR INTERNAL PILOT APPLICATIONS

Gauges	Single pressure Regulator 14 end Same regulated pressure to ports 2 and 4	Single pressure Regulator 12 end Same regulated pressure to ports 2 and 4	Dual pressure Regulator 14 end Regulated pressure to port 4 *	Dual pressure Regulator 12 end Regulated pressure to port 2 *	Dual pressure Dual regulator Two regulated pressures to ports 2 and 4 *
No gauge	PRA2C-1AAA	PRA2C-1EAA	PRA2C-1BAA	PRA2C-1FAA	PRA2C-1JAA
With gauge	PRA2C-1ADA	PRA2C-1EDA	PRA2C-1BDA	PRA2C-1FDA	-----
Two gauges	-----	-----	PRA2C-1BEA	PRA2C-1FEA	PRA2C-1JEA

REGULATORS FOR EXTERNAL PILOT AND REMOTE AIR APPLICATIONS

Gauges	Single pressure Regulator 14 end Same regulated pressure to ports 2 and 4	Single pressure Regulator 12 end Same regulated pressure to ports 2 and 4	Dual pressure Regulator 14 end Regulated pressure to port 4 *	Dual pressure Regulator 12 end Regulated pressure to port 2 *	Dual pressure Dual regulator Two regulated pressures to ports 2 and 4 *
No gauge	PRA2C-2AAA	PRA2C-2EAA	PRA2C-2BAA	PRA2C-2FAA	PRA2C-2JAA
With gauge	PRA2C-2ADA	PRA2C-2EDA	PRA2C-2BDA	PRA2C-2FDA	-----
Two gauges	-----	-----	PRA2C-2BEA	PRA2C-2FEA	PRA2C-2JEA

* - To be used with dual pressure valves.

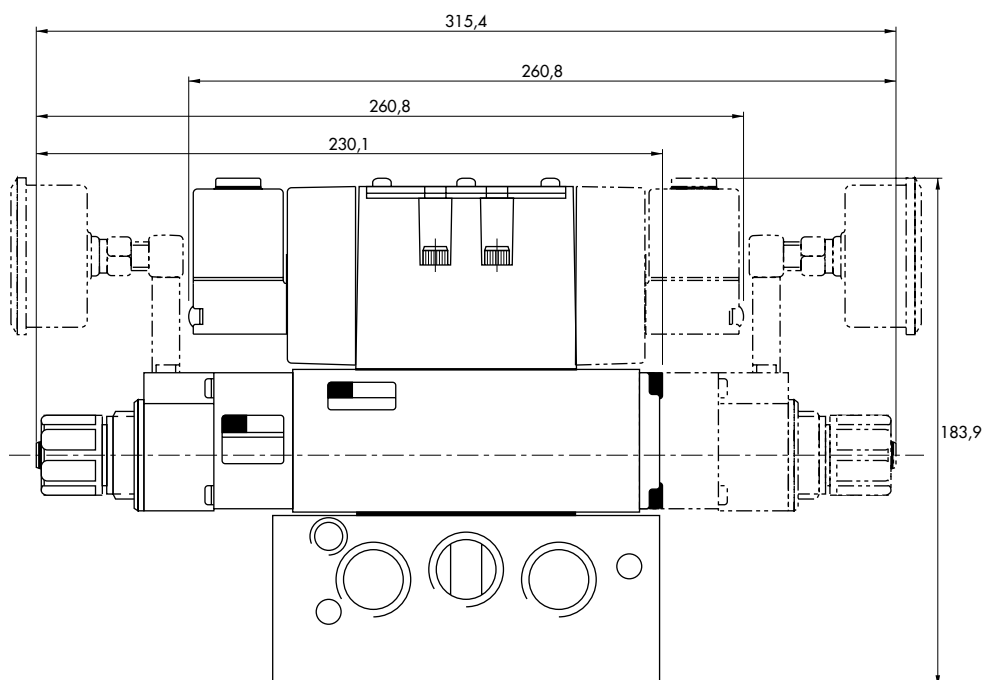
- Valve code is : MV-A2B-AX5X-PM-XXYYZ

**TECHNICAL
 DATA**

Fluid :	Compressed air, inert gases
Pressure range :	0 to 10 bar
Regulating range :	0.5 to 8.5 bar
Lubrication :	Not required, if used select a medium aniline point lubricant (between 80°C and 100°C)
Filtration :	40 µ
Temperature range :	-18°C to +50°C
Flow (at 6 bar, ΔP=1bar) :	2300 NI/min (C _v 2.3)

Spare parts : • Pressure regulator : PRA2C-30AA.

DIMENSIONS



Sandwich pressure regulator with air adjust.

OPERATIONAL BENEFITS

1. Easy mounting : saves on installation costs in comparison with inline regulators.
2. Allows to have compact, all-included units.
3. Large orifice provides high flow.
4. Various functions available.
5. Simple, reliable and solid design.



HOW TO ORDER

Reset

REGULATORS FOR INTERNAL PILOT APPLICATIONS

Gauges	Single pressure Regulator 14 end Same regulated pressure to ports 2 and 4	Single pressure Regulator 12 end Same regulated pressure to ports 2 and 4	Dual pressure Regulator 14 end Regulated pressure to port 4 *	Dual pressure Regulator 12 end Regulated pressure to port 2 *	Dual pressure Dual regulator Two regulated pressures to ports 2 and 4 *
No gauge	PRA2C-4AAA	PRA2C-4EAA	PRA2C-4BAA	PRA2C-4FAA	PRA2C-4JAA
With gauge	PRA2C-4ADA	PRA2C-4EDA	PRA2C-4BDA	PRA2C-4FDA	-----
Two gauges	-----	-----	PRA2C-4BEA	PRA2C-4FEA	PRA2C-4JEA

REGULATORS FOR EXTERNAL PILOT AND REMOTE AIR APPLICATIONS

Gauges	Single pressure Regulator 14 end Same regulated pressure to ports 2 and 4	Single pressure Regulator 12 end Same regulated pressure to ports 2 and 4	Dual pressure Regulator 14 end Regulated pressure to port 4 *	Dual pressure Regulator 12 end Regulated pressure to port 2 *	Dual pressure Dual regulator Two regulated pressures to ports 2 and 4 *
No gauge	PRA2C-5AAA	PRA2C-5EAA	PRA2C-5BAA	PRA2C-5FAA	PRA2C-5JAA
With gauge	PRA2C-5ADA	PRA2C-5EDA	PRA2C-5BDA	PRA2C-5FDA	-----
Two gauges	-----	-----	PRA2C-5BEA	PRA2C-5FEA	PRA2C-5JEA

* - To be used with dual pressure valves.
 - Valve code is : MV-A2B-AX5X-PM-XXYYZ

**TECHNICAL
 DATA**

Fluid :	Compressed air, inert gases
Pressure range :	0 to 10 bar
Regulating range :	0.5 to 8.5 bar
Lubrication :	Not required, if used select a medium aniline point lubricant (between 80°C and 100°C)
Filtration :	40 µ
Temperature range :	-18°C to +50°C
Flow (at 6 bar, ΔP=1bar) :	2300 NI/min (C _v 2.3)

Spare parts : • Pressure regulator : PRA2C-60AA.

DIMENSIONS

